



WIDRAFLEX

SEALING TAPES

PRODUCT CATALOGUE

www.widraflex.eu

About us



WIDRAFLEX – the leading supplier of “white label” waterproofing products.

Waterproofing is one of the most important aspect of any construction job. Waterproofing allows high quality protection of your home, bathtub, balcony, kitchen or pool against water leaks and moisture.

Liquid and semi-liquid waterproofing products like cement based, epoxy based, polyurethane based materials, are most used.



Our company Crocum d.o.o. with years of experience in sales & production of high quality waterproofing products has developed a new “white label” product line of sealing tapes “WIDRAFLEX”.

Tapes can be made in different colors, shapes, dimensions and quality according to your needs and requirements.

For more information about our white label waterproofing sealing tapes please contact us.

Crocum Ltd. is a reliable business partner for all companies that have a need for their own branded sealing strips. On the sealing tapes we'll also print your logo, pack in the desired packaging and send them to your address.

Contact us today and get a non binding offer of WIDRAFLEX waterproofing sealing tapes.

Crocum Ltd. is headquartered in Dubrovnik (Croatia) – EUROPEAN UNION.

FOUNDER & CEO

Available colors



RAL 1000	RAL 1001	RAL 1002	RAL 1003	RAL 1004	RAL 1005	RAL 1006	RAL 1007
RAL 1011	RAL 1012	RAL 1013	RAL 1014	RAL 1015	RAL 1016	RAL 1017	RAL 1018
RAL 1019	RAL 1020	RAL 1021	RAL 1023	RAL 1024	RAL 1027	RAL 1028	RAL 1032
RAL 1033	RAL 1034	RAL 2000	RAL 2001	RAL 2002	RAL 2003	RAL 2004	RAL 2008
RAL 2009	RAL 2010	RAL 2011	RAL 2012	RAL 3000	RAL 3001	RAL 3002	RAL 3003
RAL 3004	RAL 3005	RAL 3007	RAL 3009	RAL 3011	RAL 3012	RAL 3013	RAL 3014
RAL 3015	RAL 3016	RAL 3017	RAL 3018	RAL 3020	RAL 3022	RAL 3027	RAL 3031
RAL 4001	RAL 4002	RAL 4003	RAL 4004	RAL 4005	RAL 4006	RAL 4007	RAL 4008
RAL 4009	RAL 5000	RAL 5001	RAL 5002	RAL 5003	RAL 5004	RAL 5005	RAL 5007
RAL 5008	RAL 5009	RAL 5010	RAL 5011	RAL 5012	RAL 5013	RAL 5014	RAL 5015
RAL 5017	RAL 5018	RAL 5019	RAL 5020	RAL 5021	RAL 5022	RAL 5023	RAL 5024
RAL 6000	RAL 6001	RAL 6002	RAL 6003	RAL 6004	RAL 6005	RAL 6006	RAL 6007
RAL 6008	RAL 6009	RAL 6010	RAL 6011	RAL 6012	RAL 6013	RAL 6014	RAL 6015
RAL 6016	RAL 6017	RAL 6018	RAL 6019	RAL 6020	RAL 6021	RAL 6022	RAL 6024
RAL 6025	RAL 6026	RAL 6027	RAL 6028	RAL 6029	RAL 6032	RAL 6033	RAL 6034
RAL 7000	RAL 7001	RAL 7001	RAL 7002	RAL 7003	RAL 7004	RAL 7005	RAL 7006
RAL 7008	RAL 7009	RAL 7010	RAL 7011	RAL 7012	RAL 7013	RAL 7015	RAL 7016
RAL 7021	RAL 7022	RAL 7023	RAL 7024	RAL 7026	RAL 7030	RAL 7031	RAL 7032
RAL 7033	RAL 7034	RAL 7035	RAL 7036	RAL 7037	RAL 7038	RAL 7039	RAL 7040
RAL 7042	RAL 7043	RAL 7044	RAL 8000	RAL 8001	RAL 8002	RAL 8003	RAL 8004
RAL 8007	RAL 8008	RAL 8011	RAL 8012	RAL 8014	RAL 8015	RAL 8016	RAL 8017
RAL 8019	RAL 8022	RAL 8023	RAL 8024	RAL 8025	RAL 8028	RAL 9001	RAL 9002
RAL 9003	RAL 9004	RAL 9005	RAL 9010	RAL 9011	RAL 9016	RAL 9017	RAL 9018



WIDRAFLEX

SEALING TAPES

PRODUCT TECHNICAL INFORMATION

www.widraflex.eu

Special coated wrap knitted fabric, flexible in cross direction and stiff lengthwise, very thin with high tenacity.

Wrap knitted fabric allows very good connections with all grades of cement or solvent based adhesives, sealants or coatings.

Total width: 120 mm
Coating width: 70 mm
Other widths on request.
Total thickness: appx. 0,5 mm
Material weight: appx. 32 g/m
Based material: thermoplastic elastomer resistant to ageing
Coating color: according RAL color chart
Coating surface: moled structure
Backing surface: fabric permanent finishing
Reel lengths: 10 m, 25 m, 50 m (other lengths upon request)
Product accessories: corners and colars

Physical properties:

Breaking load longitudinal HR EN ISO 527-3:2008; 527-1: 2012	92 N / 20 mm
Breaking load lateral HR EN ISO 527-3:2008; 527-1: 2012	51 N / 20 mm
Longitudinal tensile strength HR EN ISO 527-3: 2008; 527-1: 2012	6,9 Mpa
Lateral tensile strength HR EN ISO 527-3: 2008; 527-1: 2012	3,8 Mpa
Extension break longitudinal HR EN ISO 527-3: 2008; 527-1: 2012	34%
Extension break lateral HR EN ISO 527-3: 2008; 527-1: 2012	83%
Power absorption at 25% elasticity lateral HR EN ISO	148 J/m2
Power absorption at 50% elasticity lateral HR EN ISO	414 J/m2
Resistance to water pressure HR EN 1928 (Version B)>1 bar	
UV-Resistance, min. HR EN ISO 4892-2 500 h	

Chemical Properties – storage 7 days at room

Rating scale:

+ = resistant

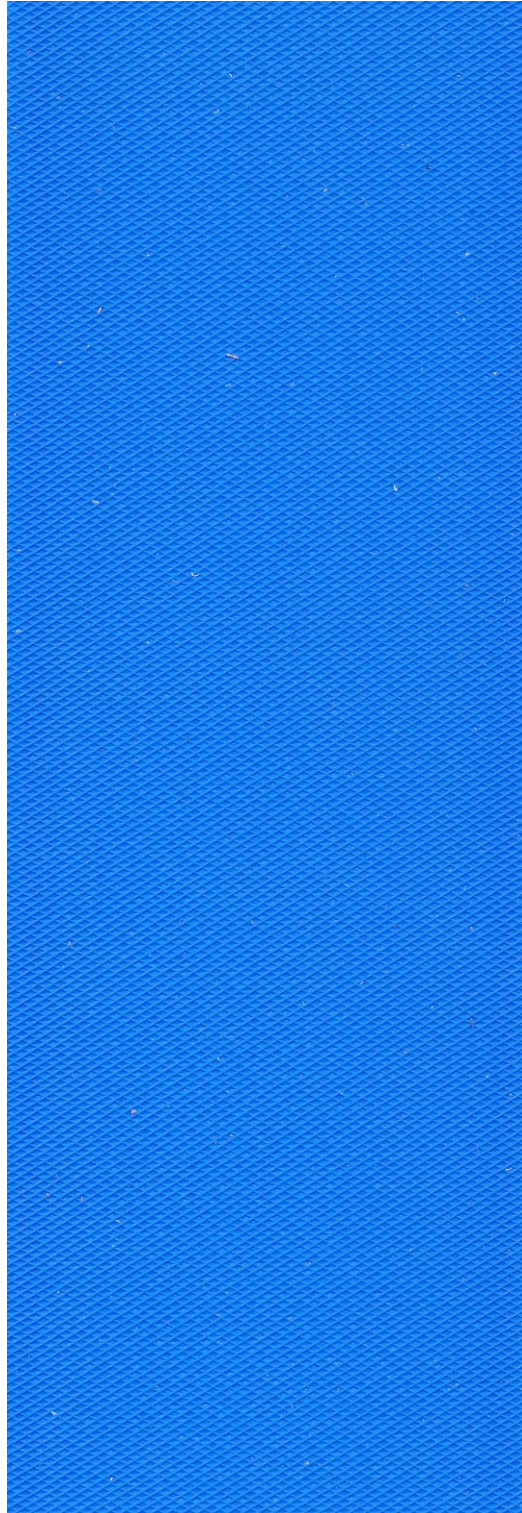
0 = poor

- = without resistance

Hydrochloric acid 3% External +
Sulphur acid 35% External +
Citric acid 100 g/l External +
Lactic acid 5% External +
Sodium hypochlorite 0,3g/l External +
Salt water (20 g/l Sea water salt) External +
Alkali resistant 3%/28 days/40° External +
Tape don't loose it's own elasticity under and after storing in above listed chemicals

Note: informations in this tehcnical data sheet is based on laboratory tests performed by manufacturer. The tehcnical features are to be regarded as target values. Properties quoted are typical and does not constitute a specification nor an explicit or implicit warranty. Due to the large variability in application condition it is advisable that the product is tested by the user to establish suitability for intended use.

TS 12/7 - L
SAMPLE



Special coated wrap knitted fabric, flexible in cross direction and stiff lengthwise, thin with high tenacity.

Wrap knitted fabric allows very good connections with all grades of cement or solvent based adhesives, sealants or coatings.

Total width: 120 mm

Coating width: 70 mm

Other widths on request.

Total thickness: appx. 0,65 mm

Material weight: appx. 38 g/m

Based material: thermoplastic elastomer resistant to ageing

Coating color: according RAL color chart

Coating surface: moled structure

Backing surface: wrap knit fabric embossing in structure moled coating

Reel lengths: 10 m, 25 m, 50 m (other lengths upon request)

Product accessories: corners and colars

Physical properties:

Breaking load longitudinal HR EN ISO 527-3:2008; 527-1: 2012	92 N / 20 mm
Breaking load lateral HR EN ISO 527-3:2008; 527-1: 2012	51 N / 20 mm
Longitudinal tensile strength HR EN ISO 527-3: 2008; 527-1: 2012	6,9 Mpa
Lateral tensile strength HR EN ISO 527-3: 2008; 527-1: 2012	3,8 Mpa
Extension break longitudinal HR EN ISO 527-3: 2008; 527-1: 2012	34%
Extension break lateral HR EN ISO 527-3: 2008; 527-1: 2012	83%
Power absorption at 25% elasticity lateral HR EN ISO	148 J/m2
Power absorption at 50% elasticity lateral HR EN ISO	414 J/m2
Resistance to water pressure HR EN 1928 (Version B)>1,5 bar	
UV-Resistance, min. HR EN ISO 4892-2 500 h	

Chemical Properties – storage 7 days at room

Rating scale:

+ = resistant

0 = poor

- = without resistance

Hydrochloric acid 3% External +

Sulphur acid 35% External +

Citric acid 100 g/l External +

Lactic acid 5% External +

Sodium hypochlorite 0,3g/l External +

Salt water (20 g/l Sea water salt) External +

Alkali resistant 3%/28 days/40° External +

Tape don't loose it's own elasticity under and after storaging in above listed chemicals

Note: informations in this tehcnical data sheet is based on laboratory tests performed by manufacturer. The tehcnical features are to be regarded as target values. Properties quoted are typical and does not constitute a specification nor an explicit or implicit warranty. Due to the large variability in application condition it is advisable that the product is tested by the user to establish suitability for intended use.

TS 12/7
SAMPLE



Special coated wrap knitted fabric with elongation zone in the middle, highly flexible in cross direction and stiff lengthwise. High tenacity.
Wrap knitt fabric allows very good connections with all grades of cement or solvent based adhesives, sealants or coatings.

Total width: 120 mm
Coating width: 70 mm
Elongation middle zone: 20 mm
Other widths on request.
Total thickness: appx. 0,75 mm
Material weight: appx. 38 g/m
Based material: thermoplastic elastomer resistant to ageing
Coating color: according RAL color chart
Coating surface: moled structure
Backing surface: wrap knit fabric parted by 20 mm middle elongation zone
Reel lengths: 10 m, 25 m, 50 m (other lengths upon request)
Product accessories: corners and colars

Physical properties:

Breaking load longitudinal HR EN ISO 527-3:2008; 527-1: 2012	13 N / 20 mm
Breaking load lateral HR EN ISO 527-3:2008; 527-1: 2012	11 N / 20 mm
Longitudinal tensile strength HR EN ISO 527-3: 2008; 527-1: 2012	1,3 Mpa
Lateral tensile strength HR EN ISO 527-3: 2008; 527-1: 2012	1,1 Mpa
Extension break longitudinal HR EN ISO 527-3: 2008; 527-1: 2012	36%
Extension break lateral HR EN ISO 527-3: 2008; 527-1: 2012	60%
Power absorption at 25% elasticity lateral HR EN ISO	40 J/m ²
Power absorption at 50% elasticity lateral HR EN ISO	111 J/m ²
Resistance to water pressure HR EN 1928 (Version B)>1,5 bar	
UV-Resistance, min. HR EN ISO 4892-2 500 h	

Chemical Properties – storage 7 days at room

Rating scale:

+ = resistant

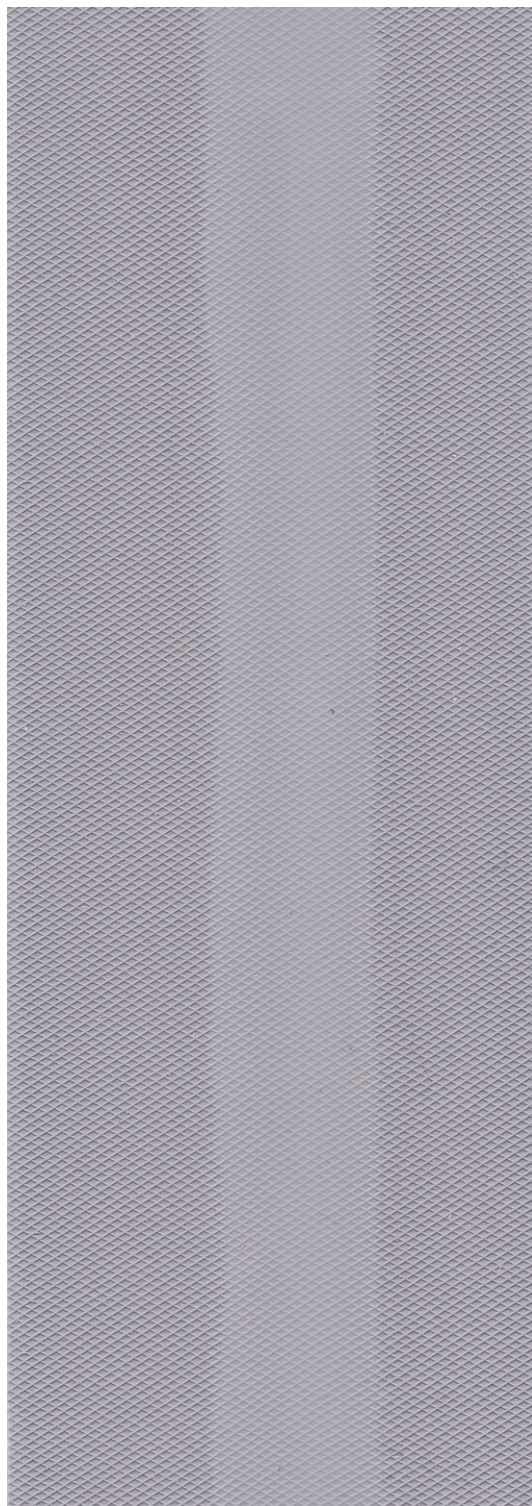
0 = poor

- = without resistance

Hydrochloric acid 3% External +
Sulphur acid 35% External +
Citric acid 100 g/l External +
Lactic acid 5% External +
Sodium hypochlorite 0,3g/l External +
Salt water (20 g/l Sea water salt) External +
Alkali resistant 3%/28 days/40° pH10 External +
Tape don't loose it's own elasticity under above listed chemicals

Note: informations in this tehcnical data sheet is based on laboratory tests performed by manufacturer. The tehcnical features are to be regarded as target values. Properties quoted are typical and does not constitute a specification nor an explicit or implicit warranty. Due to the large variability in application condition it is advisable that the product is tested by the user to establish suitability for intended use.

TS 12/7 E
SAMPLE



Special coated polypropylene spunlace with elongation zone in the middle of tape, highly flexible in cross direction and stiff lengthwise. High tenacity.

Polypropylene fleece allows excellent connections with all grades of cement or solvent based adhesives, sealants or coatings.

Total width: 120 mm

Coating width: 70 mm

Elongation middle zone: 20 mm

Other widths on request.

Total thickness: appx. 0,65 mm

Material weight: appx. 38 g/m

Based material: thermoplastic elastomer resistant to ageing

Coating color: according RAL color chart

Coating surface: moled structure

Backing surface: polypropylene spunlace parted by 20 mm middle elongation zone

Reel lengths: 10 m, 25 m, 50 m (other lengths upon request)

Product accessories: corners and colars

Physical properties:

Breaking load longitudinal HR EN ISO 527-3:2008; 527-1: 2012	92 N / 20 mm
Breaking load lateral HR EN ISO 527-3:2008; 527-1: 2012	11 N / 20 mm
Longitudinal tensile strength HR EN ISO 527-3: 2008; 527-1: 2012	1,3 Mpa
Lateral tensile strength HR EN ISO 527-3: 2008; 527-1: 2012	1,1 Mpa
Extension break longitudinal HR EN ISO 527-3: 2008; 527-1: 2012	63%
Extension break lateral HR EN ISO 527-3: 2008; 527-1: 2012	273%
Power absorption at 25% elasticity lateral HR EN ISO	40 J/m ²
Power absorption at 50% elasticity lateral HR EN ISO	111 J/m ²
Resistance to water pressure HR EN 1928 (Version B)>1,5 bar	
UV-Resistance, min. HR EN ISO 4892-2 500 h	

Chemical Properties – storage 7 days at room

Rating scale:

+ = resistant

0 = poor

- = without resistance

Hydrochloric acid 3% External +

Sulphur acid 35% External +

Citric acid 100 g/l External +

Lactic acid 5% External +

Sodium hypochlorite 0,3g/l External +

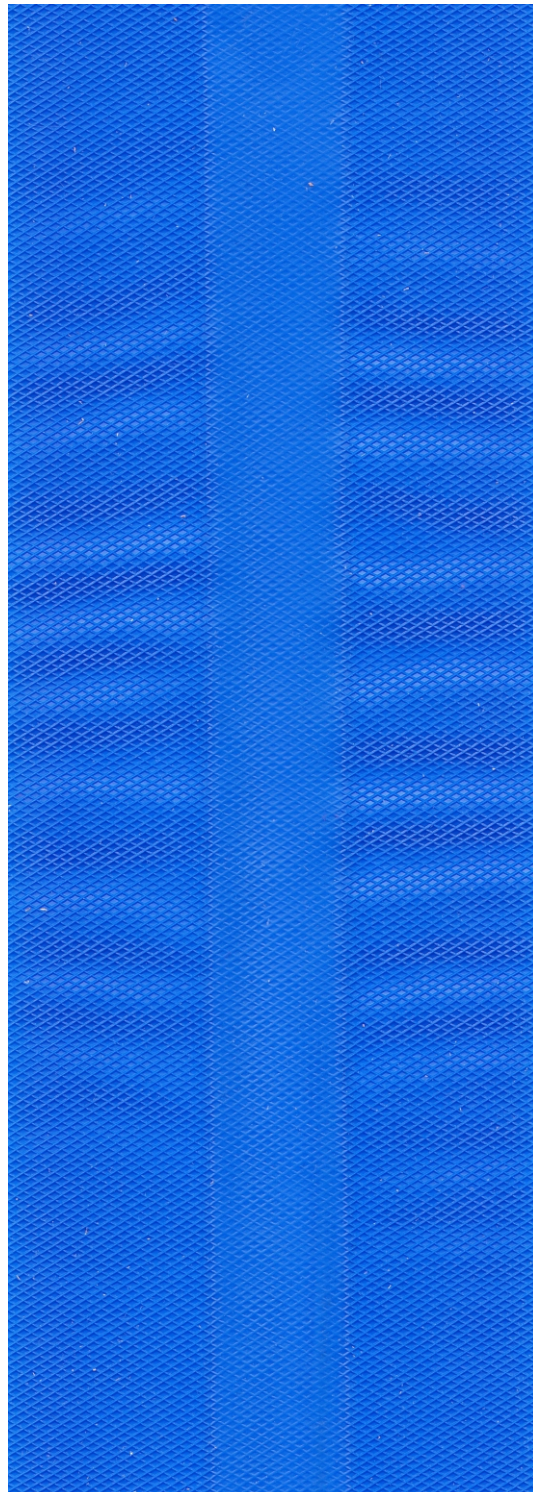
Salt water (20 g/l Sea water salt) External +

Alkali resistant 3%/28 days/40° pH10 External +

Tape don't loose it's own elasticity under above listed chemicals

Note: informations in this tehcnical data sheet is based on laboratory tests performed by manufacturer. The tehcnical features are to be regarded as target values. Properties quoted are typical and does not constitute a specification nor an explicit or implicit warranty. Du to the large variability in application condition it is advisable that the product is tested by the user to establish suitability for intended use.

MS 12/7 E
SAMPLE



Special coated polypropylene spunlace, flexible in cross direction and stiff lengthwise. High tenacity. Polypropylene fleece allows excellent connections with all grades of cement or solvent based adhesives, sealants or coatings.

Total width: 120 mm
Coating width: 70 mm
Other widths on request.
Total thickness: appx. 0,65 mm
Material weight: appx. 38 g/m
Based material: thermoplastic elastomer resistant to ageing
Coating color: according RAL color chart
Coating surface: molded structure
Backing surface: polypropylene spunlace permanent finishing
Reel lengths: 10 m, 25 m, 50 m (other lengths upon request)
Product accessories: corners and colars

Physical properties:

Breaking load longitudinal HR EN ISO 527-3:2008; 527-1: 2012	71 N / 20 mm
Breaking load lateral HR EN ISO 527-3:2008; 527-1: 2012	51 N / 20 mm
Longitudinal tensile strength HR EN ISO 527-3: 2008; 527-1: 2012	5,0 Mpa
Lateral tensile strength HR EN ISO 527-3: 2008; 527-1: 2012	3,6 Mpa
Extension break longitudinal HR EN ISO 527-3: 2008; 527-1: 2012	64 %
Extension break lateral HR EN ISO 527-3: 2008; 527-1: 2012	71 %
Power absorption at 25% elasticity lateral HR EN ISO	265 J/m ²
Power absorption at 50% elasticity lateral HR EN ISO	801 J/m ²
Resistance to water pressure HR EN 1928 (Version B) >1,5 bar	
UV-Resistance, min. HR EN ISO 4892-2 500 h	

Chemical Properties – storage 7 days at room

Rating scale:

+ = resistant

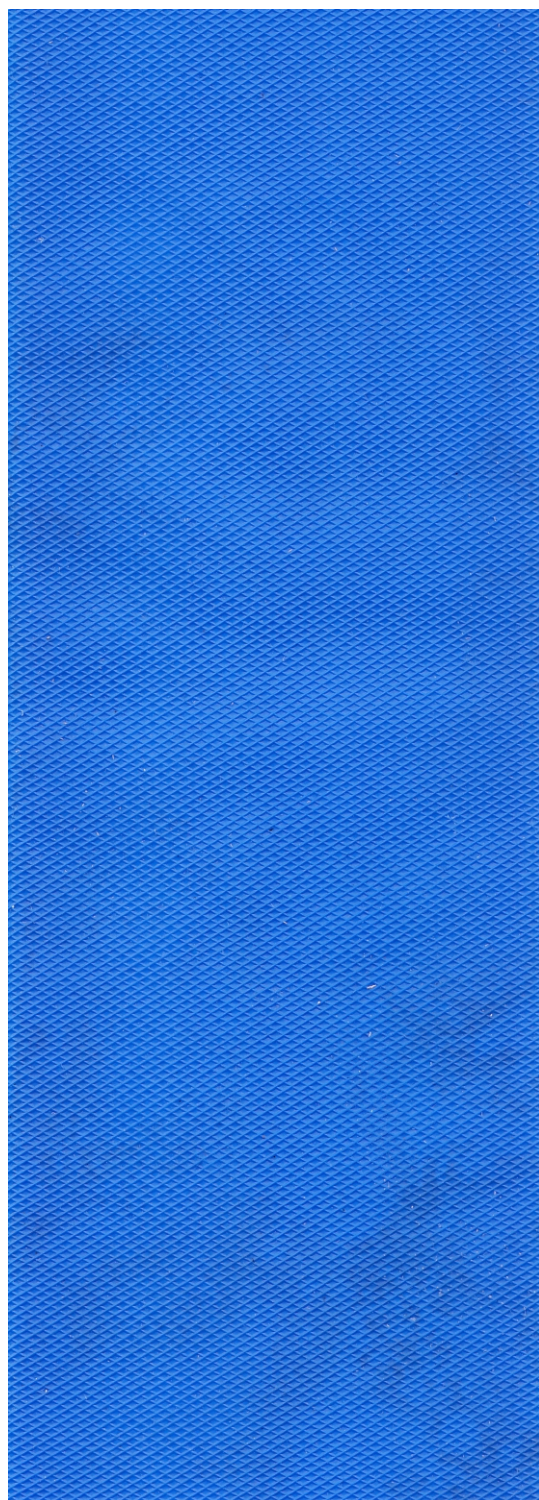
0 = poor

- = without resistance

Hydrochloric acid 3% External +
Sulphur acid 35% External +
Citric acid 100 g/l External +
Lactic acid 5% External +
Sodium hypochlorite 0,3g/l External +
Salt water (20 g/l Sea water salt) External +
Alkali resistant 3%/28 days/40° External +
Tape don't loose it's own elasticity under above listed chemicals

Note: informations in this tehcnical data sheet is based on laboratory tests performed by manufacturer. The tehcnical features are to be regarded as target values. Properties quoted are typical and does not constitute a specification nor an explicit or implicit warranty. Due to the large variability in application condition it is advisable that the product is tested by the user to establish suitability for intended use.

MS 12/7
SAMPLE



3- ply tape coated both sides with special polyester non woven, highly flexible in cross direction and stiff lengthwise. High tenacity.

Polyester non woven allows excellent connections with all grades of cement or solvent based adhesives, sealants or coatings.

Total width: 120 mm

Coating width: 120 mm

Other widths on request.

Total thickness: appx. 0,65 mm

Material weight: appx. 75 g/m

Based material: thermoplastic elastomer resistant to ageing

Coating color: according RAL color chart

Coating surface: TPE rubber laminate with special polyester non woven fleece on both sides.

Reel lengths: 10 m, 25 m, 50 m (other lengths upon request)

Product accessories: corners and colars

Physical properties:

Breaking load longitudinal HR EN ISO 527-3:2008; 527-1: 2012	181 N / 20 mm
Breaking load lateral HR EN ISO 527-3:2008; 527-1: 2012	31 N / 20 mm
Longitudinal tensile strength HR EN ISO 527-3: 2008; 527-1: 2012	14,1 Mpa
Lateral tensile strength HR EN ISO 527-3: 2008; 527-1: 2012	2,4 Mpa
Extension break longitudinal HR EN ISO 527-3: 2008; 527-1: 2012	40 %
Extension break lateral HR EN ISO 527-3: 2008; 527-1: 2012	124 %
Power absorption at 25% elasticity lateral HR EN ISO	95 J/m ²
Power absorption at 50% elasticity lateral HR EN ISO	294 J/m ²
Resistance to water pressure HR EN 1928 (Version B)>1,5 bar	
UV-Resistance, min. HR EN ISO 4892-2 500 h	

Chemical Properties – storage 7 days at room

Rating scale:

+ = resistant

0 = poor

- = without resistance

Hydrochloric acid 3% External +

Sulphur acid 35% External +

Citric acid 100 g/l External +

Lactic acid 5% External +

Sodium hypochlorite 0,3g/l External +

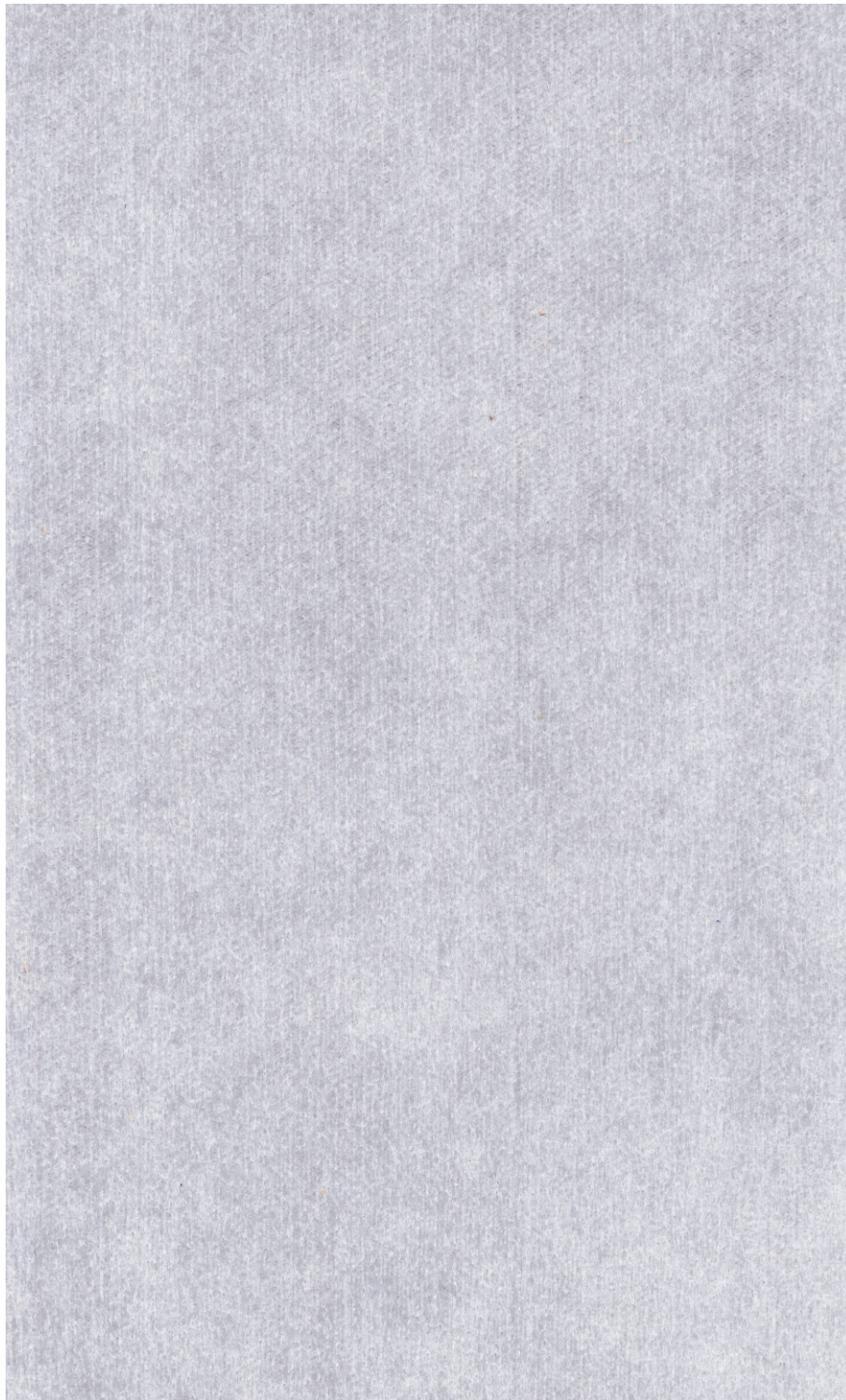
Salt water (20 g/l Sea water salt) External +

Alkali resistant 3%/28 days/40° External +

Tape don't loose it's own elasticity under above listed chemicals

Note: informations in this tehcnical data sheet is based on laboratory tests performed by manufacturer. The tehcnical features are to be regarded as target values. Properties quoted are typical and does not constitute a specification nor an explicit or implicit warranty. Due to the large variability in application condition it is advisable that the product is tested by the user to establish suitability for intended use.

PS 12/3
SAMPLE



Special coated polyester non woven tape, flexible in cross direction and stiff lengthwise, thin with high tenacity. Polyester non woven allows excellent connections with all grades of cement or solvent based adhesives, sealants or coatings.

Total width: 120 mm
Coating width: 70 mm
Other widths on request.
Total thickness: appx. 0,60 mm
Material weight: appx. 38 g/m
Based material: thermoplastic elastomer resistant to ageing
Coating color: according RAL color chart
Coating surface: moled structure
Backing surface: polyester nonwoven with lining finishing.
Reel lengths: 10 m, 25 m, 50 m (other lengths upon request)
Product accessories: corners and colars

Physical properties:

Breaking load longitudinal HR EN ISO 527-3:2008; 527-1: 2012	92 N / 20 mm
Breaking load lateral HR EN ISO 527-3:2008; 527-1: 2012	36 N / 20 mm
Longitudinal tensile strength HR EN ISO 527-3: 2008; 527-1: 2012	6,9 Mpa
Lateral tensile strength HR EN ISO 527-3: 2008; 527-1: 2012	3,8 Mpa
Extension break longitudinal HR EN ISO 527-3: 2008; 527-1: 2012	34%
Extension break lateral HR EN ISO 527-3: 2008; 527-1: 2012	120%
Power absorption at 25% elasticity lateral HR EN ISO	145 J/m2
Power absorption at 50% elasticity lateral HR EN ISO	410 J/m2
Resistance to water pressure HR EN 1928 (Version B)>1,5 bar	
UV-Resistance, min. HR EN ISO 4892-2 500 h	

Chemical Properties – storage 7 days at room

Rating scale:

+ = resistant

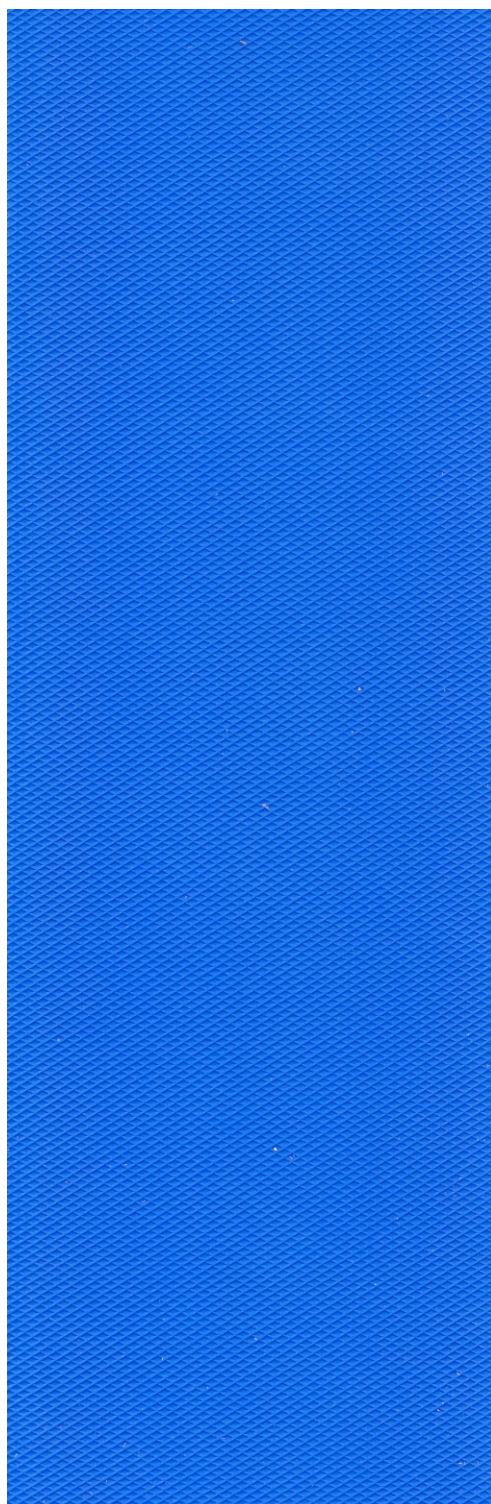
0 = poor

- = without resistance

Hydrochloric acid 3% External +
Sulphur acid 35% External +
Citric acid 100 g/l External +
Lactic acid 5% External +
Sodium hypochlorite 0,3g/l External +
Salt water (20 g/l Sea water salt) External +
Alkali resistant 3%/28 days/40° External +
Tape don't loose it's own elasticity under above listed chemicals

Note: informations in this tehcnical data sheet is based on laboratory tests performed by manufacturer. The tehcnical features are to be regarded as target values. Properties quoted are typical and does not constitute a specification nor an explicit or implicit warranty. Du to the large variability in application condition it is advisable that the product is tested by the user to establish suitability for intended use.

PS 12/7
SAMPLE



Special wrap knit polyester fleece with additional polyester spunlace fabric on the back, flexible in cross direction and rigid lengthwise, thin with high tenacity.

Additional polyester spunlace fabric allows excellent bonding with all grades of cement or solvent based adhesives, sealants or coatings.

Total width: 120 mm

Coating width: 70 mm

Other widths on request.

Total thickness: appx. 0,70 mm

Material weight: appx. 38 g/m

Based material: thermoplastic elastomer resistant to ageing

Coating color: according RAL color chart

Coating surface: moled structure

Backing material: wrap knit fabric permanent finishing with additional PP spunlace

Reel lengths: 10 m, 25 m, 50 m (other lengths upon request)

Product accessories: corners and colars

Physical properties:

Breaking load longitudinal HR EN ISO 527-3:2008; 527-1: 2012	92 N / 20 mm
Breaking load lateral HR EN ISO 527-3:2008; 527-1: 2012	51 N / 20 mm
Longitudinal tensile strength HR EN ISO 527-3: 2008; 527-1: 2012	6,9 Mpa
Lateral tensile strength HR EN ISO 527-3: 2008; 527-1: 2012	3,8 Mpa
Extension break longitudinal HR EN ISO 527-3: 2008; 527-1: 2012	34%
Extension break lateral HR EN ISO 527-3: 2008; 527-1: 2012	83%
Power absorption at 25% elasticity lateral HR EN ISO	148 J/m2
Power absorption at 50% elasticity lateral HR EN ISO	414 J/m2
Resistance to water pressure HR EN 1928 (Version B)>1,5 bar	
UV-Resistance, min. HR EN ISO 4892-2 500 h	

Chemical Properties – storage 7 days at room

Rating scale:

+ = resistant

0 = poor

- = without resistance

Hydrochloric acid 3% External +

Sulphur acid 35% External +

Citric acid 100 g/l External +

Lactic acid 5% External +

Sodium hypochlorite 0,3g/l External +

Salt water (20 g/l Sea water salt) External +

Alkali resistant 3%/28 days/40° External +

Tape don't loose it's own elasticity under above listed chemicals

Note: informations in this tehcnical data sheet is based on laboratory tests performed by manufacturer. The tehcnical features are to be regarded as target values. Properties quoted are typical and does not constitute a specification nor an explicit or implicit warranty. Due to the large variability in application condition it is advisable that the product is tested by the user to establish suitability for intended use.

TS 12/7 PLUS

SAMPLE



PP non woven, very flexible in cross direction due the elongation zone in the middle of the tape and rigid lengthwise, thin with high tenacity.

PP non woven fabric allows excellent bonding with all grades of cement or solvent based adhesives, sealants or coatings.

Total width: 120 mm

Coating width: 70 mm

Other widths on request.

Total thickness: appx. 0,60 mm

Material weight: appx. 45 g/m

Middle elongation zone 20 mm

Based material: thermoplastic elastomer resistant to ageing

Coating color: according RAL color chart

Coating surface: moled structure

Backng surface: PP non woven fleece parted by 20 mm middle elongation zone

Reel lengths: 10 m, 25 m, 50 m (other lengths upon request)

Product accessories: corners and colars

Physical properties:

Breaking load longitudinal HR EN ISO 527-3:2008; 527-1: 2012	13 N / 20 mm
Breaking load lateral HR EN ISO 527-3:2008; 527-1: 2012	11 N / 20 mm
Longitudinal tensile strength HR EN ISO 527-3: 2008; 527-1: 2012	1,3 Mpa
Lateral tensile strength HR EN ISO 527-3: 2008; 527-1: 2012	1,1 Mpa
Extension break longitudinal HR EN ISO 527-3: 2008; 527-1: 2012	36%
Extension break lateral HR EN ISO 527-3: 2008; 527-1: 2012	160%
Power absorption at 25% elasticity lateral HR EN ISO	40 J/m2
Power absorption at 50% elasticity lateral HR EN ISO	111 J/m2
Resistance to water pressure HR EN 1928 (Version B)>1,5 bar	
UV-Resistance, min. HR EN ISO 4892-2 500 h	

Chemical Properties – storage 7 days at room

Rating scale:

+ = resistant

0 = poor

- = without resistance

Hydrochloric acid 3% External +

Sulphur acid 35% External +

Citric acid 100 g/l External +

Lactic acid 5% External +

Sodium hypochlorite 0,3g/l External +

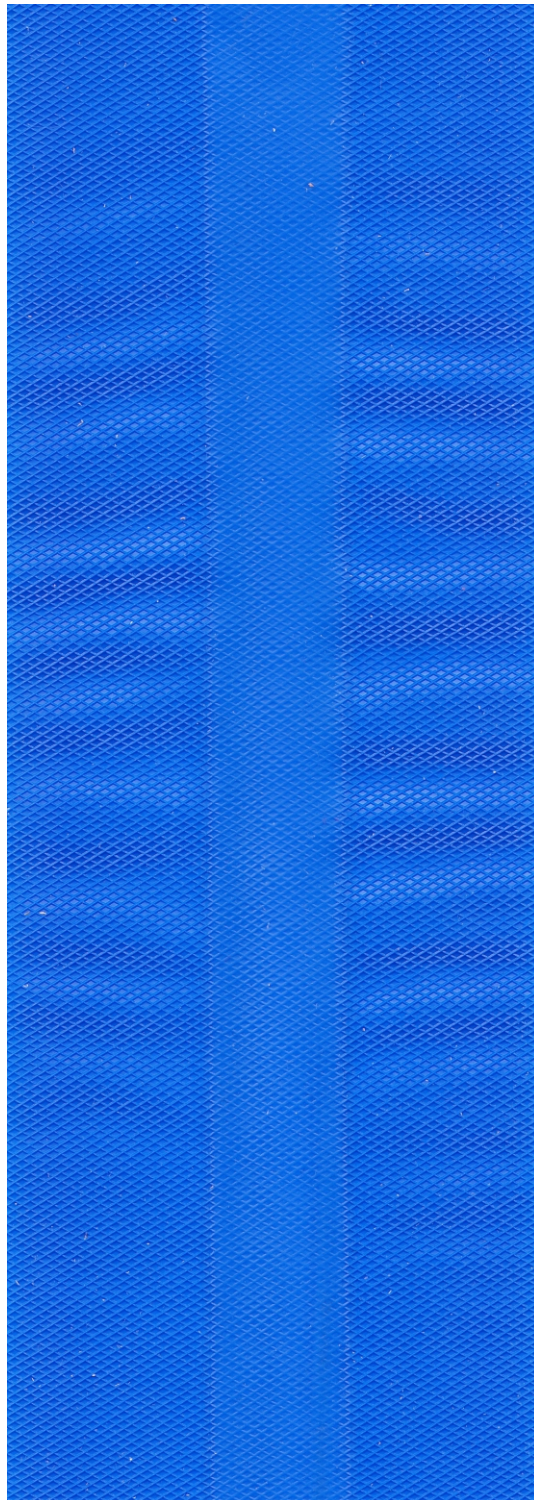
Salt water (20 g/l Sea water salt) External +

Alkali resistant 3%/28 days/40° External +

Tape don't loose it's own elasticity under above listed chemicals

Note: informations in this tehcnical data sheet is based on laboratory tests performed by manufacturer. The tehcnical features are to be regarded as target values. Properties quoted are typical and does not constitute a specification nor an explicit or implicit warranty. Due to the large variability in application condition it is advisable that the product is tested by the user to establish suitability for intended use.

F-MS 12/7 E
SAMPLE



PP non woven, flexible in cross direction and rigid lengthwise, thin with high tenacity.

PP non woven fabric allows excellent bonding with all grades of cement or solvent based adhesives, sealants or coatings.

Total width: 120 mm

Coating width: 70 mm

Other widths on request.

Total thickness: appx. 0,60 mm

Material weight: appx. 45 g/m

Based material: thermoplastic elastomer resistant to ageing

Coating color: according RAL color chart

Coating surface: moled structure

Backng surface: PP non woven fleece with lining finishing

Reel lengths: 10 m, 25 m, 50 m (other lengths upon request)

Product accessories: corners and colars

Physical properties:

Breaking load longitudinal HR EN ISO 527-3:2008; 527-1: 2012

71 N / 20 mm

Breaking load lateral HR EN ISO 527-3:2008; 527-1: 2012

51 N / 20 mm

Longitudinal tensile strength HR EN ISO 527-3: 2008; 527-1: 2012

5,0 Mpa

Lateral tensile strength HR EN ISO 527-3: 2008; 527-1: 2012

3,6 Mpa

Extension break longitudinal HR EN ISO 527-3: 2008; 527-1: 2012

64 %

Extension break lateral HR EN ISO 527-3: 2008; 527-1: 2012

71 %

Power absorption at 25% elasticity lateral HR EN ISO

265 J/m2

Power absorption at 50% elasticity lateral HR EN ISO

801 J/m2

Resistance to water pressure HR EN 1928 (Version B)>1,5 bar

UV-Resistance, min. HR EN ISO 4892-2 500 h

Chemical Properties – storage 7 days at room

Rating scale:

+ = resistant

0 = poor

- = without resistance

Hydrochloric acid 3% External +

Sulphur acid 35% External +

Citric acid 100 g/l External +

Lactic acid 5% External +

Sodium hypochlorite 0,3g/l External +

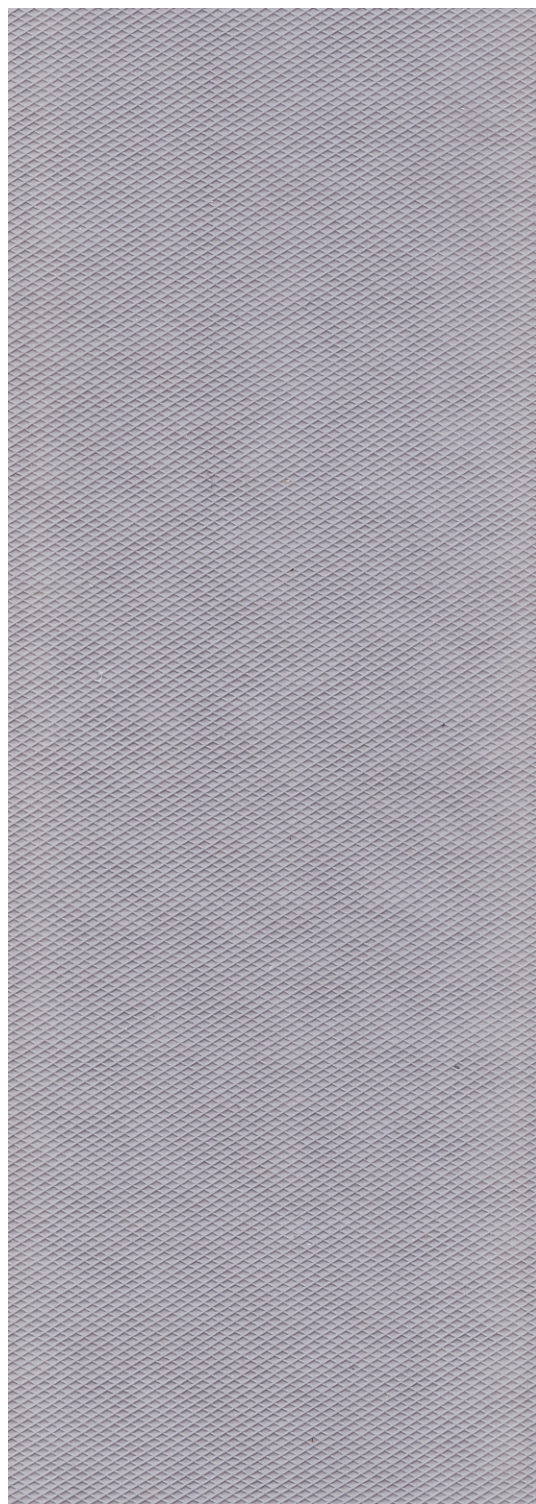
Salt water (20 g/l Sea water salt) External +

Alkali resistant 3%/28 days/40° External +

Tape don't loose it's own elasticity under above listed chemicals

Note: informations in this tehcnical data sheet is based on laboratory tests performed by manufacturer. The tehcnical features are to be regarded as target values. Properties quoted are typical and does not constitute a specification nor an explicit or implicit warranty. Du to the large variability in application condition it is advisable that the product is tested by the user to establish suitability for intended use.

F-MS 12/7
SAMPLE



Flexible sealing tape for various joints, self adhesive made from Butyl rubber coated.
Polypropylene non woven allow excellent bonding capabilities for all grades of cement or solvent based adhesives, sealants or coatings.

Color: grey

Total width: 100 mm (other widths possible upon request)

Coating width: 100 mm (other widths possible upon request)

Release paper: 105 mm silicon paper centrally split and overlapped

Total thickness: 0,8 mm (+/- 0,15 mm)

Total weight: appx: 850 g/m²

Roll length: 10 m, 25 m, 50 m (other lengths upon request)

Coating: Butyl rubber, flexible, self adhesive

Coating thickness: 0,6 mm

Coating layer: White polypropylene non woven, 40-45 g/m²

Compression 50%: 100 N/m²

Adhesion: > 19 N/cm

Butyl density: 1,50 g/cm³

Needle penetration (23°C): 80

Service temperature range °C: -30/+80

Water tightness: appx. 0,2 bar

Vapor permeability: appx. Sd 70 m

Chemical resistant: yes

Breaking strength machine direction: 60N/15mm

Breaking strength cross direction: 95N/15mm

Application temperature: >5°C (15°C - 25°C recommended)

Shelf life: at least 2 years from the date of manufacture under cool and dry storage condition

Note: informations in this technical data sheet is based on laboratory tests performed by manufacturer. The technical features are to be regarded as target values. Properties quoted are typical and does not constitute a specification nor an explicit or implicit warranty. Due to the large variability in application condition it is advisable that the product is tested by the user to establish suitability for intended use.

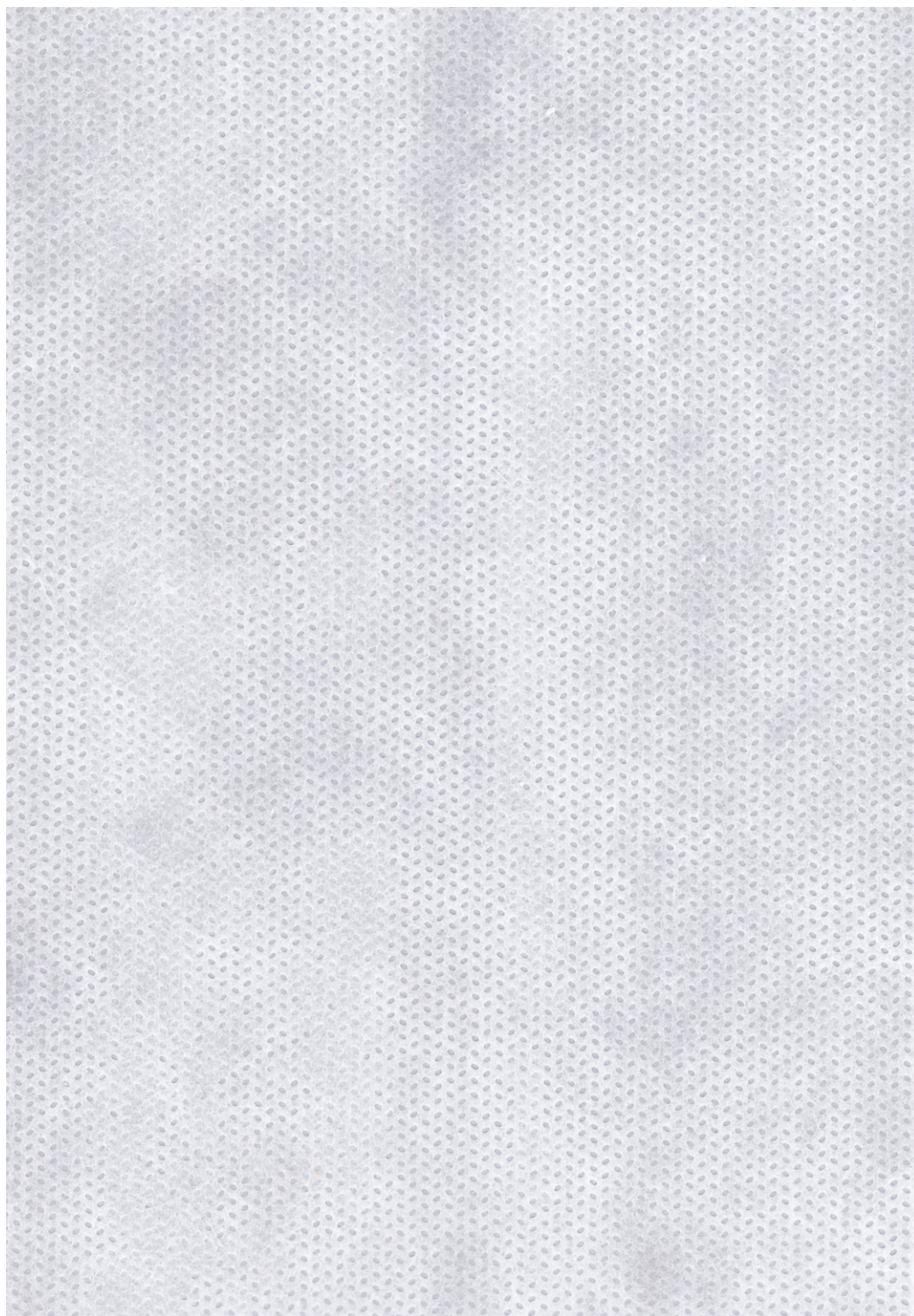
Version 02/2016

BUTYL MS100

SAMPLE



WIDRAFLEX



Special tape for high stress movement construction joints made of Thermoplastic elastomer and special PP spunlace, elastic lateral and rigid lengthwise, thick and high tenacity.
Polypropylene non woven fabric allow a very good connection capabilities with common tile adhesive or sealants.

Based material: Thermoplastic elastomer, resistant to ageing
Backing material: Polypropylene spunlace
Color: according RAL color chart
Print: available (upon request)

Total width: 240 mm
Coating width: 140 mm
Total thickness: appx. **1,2 mm**
Material weight: appx. 160 g/m

Length: 15 m roll (other lengths upon request)

Physical properties:

Burst pressure internal: max 3 bar
Resistance to water pressure HR EN 1928 (Version B) >1,5 bar
UV-Resistance, min. HR EN ISO 4892-2 500 h

Chemical Properties – storage 7 days at room

Rating scale:

+ = resistant

0 = poor

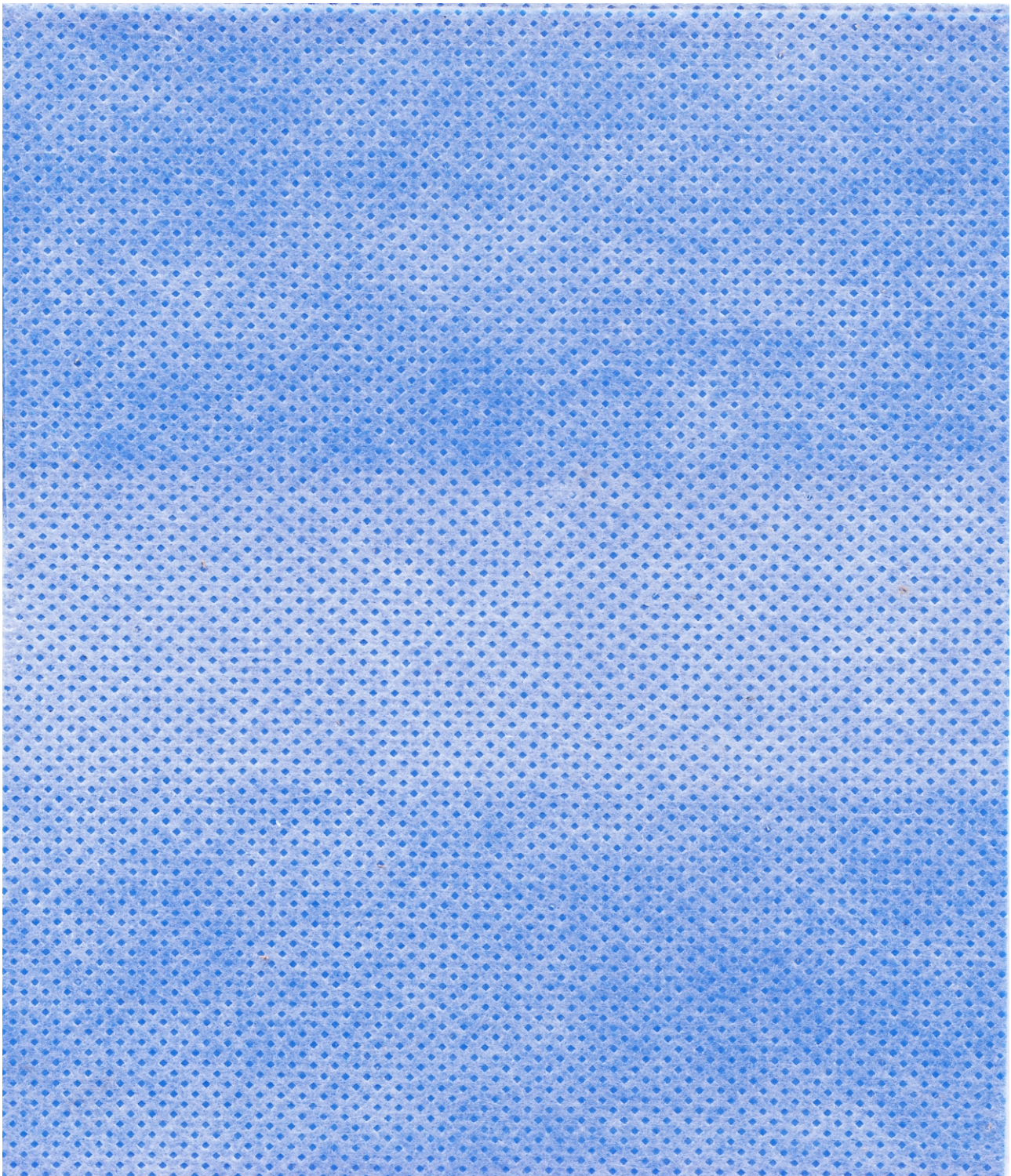
- = without resistance

Hydrochloric acid 3% External +
Sulphur acid 35% External +
Citric acid 100 g/l External +
Lactic acid 5% External +
Sodium hypochlorite 0,3g/l External +
Salt water (20 g/l Sea water salt) External +
Alkali resistant 3%/28 days/40° External +
Tape don't lose its own elasticity under and after storing in above listed chemicals

Note: informations in this technical data sheet is based on laboratory tests performed by manufacturer. The technical features are to be regarded as target values. Properties quoted are typical and does not constitute a specification nor an explicit or implicit warranty. Due to the large variability in application condition it is advisable that the product is tested by the user to establish suitability for intended use.

Version 02/2016

MS 24/14
SAMPLE





WIDRAFLEX

CONTACT & INFO

CROCUM d.o.o.

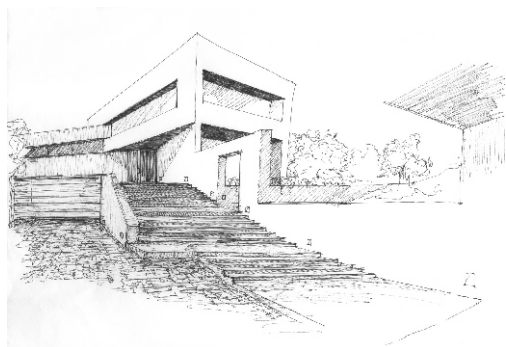
**ROŽAT GORNJI 81
20 236 MOKOŠICA (DUBROVNIK)
CROATIA (EU)**

tel. +385 (0)20 356 037

mob. +385 (0)98 262 493

fax. +385 (0)20 356 065

Email. info@widraflex.eu





WIDRAFLEX

CONTACT & INFO

CROCUM d.o.o.

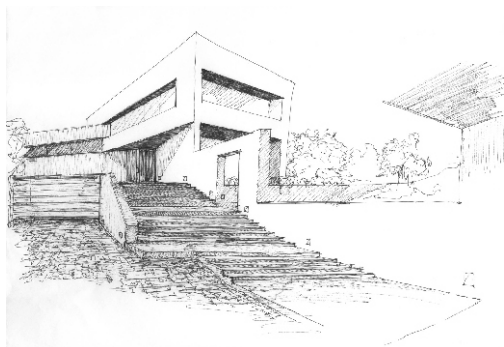
**ROŽAT GORNJI 81
20 236 MOKOŠICA (DUBROVNIK)
CROATIA (EU)**

tel. +385 (0)20 356 037

mob. +385 (0)98 262 493

fax. +385 (0)20 356 065

Email. info@widraflex.eu



www.widraflex.eu